

# Powerware 3105 UPS USER'S MANUAL

The Powerware 3105 uninterruptible power system (UPS) protects your sensitive electronic equipment from basic power problems such as power failures, power sags, power surges, and line noise.

## Features:

- Eight outlets
  - Four with surge and battery backup protection
  - Four with surge protection only
- Data Line (Internet fax/modem/DSL) or telephone line surge protection jacks
- Cold Start capability
- Proprietary LanSafe Power management software
- User-replaceable batteries
- Built-in USB communication port
- Compact design fits on/under your desk; can also be mounted to a wall
- Convenient transformer block spacing

## SAFETY INSTRUCTIONS

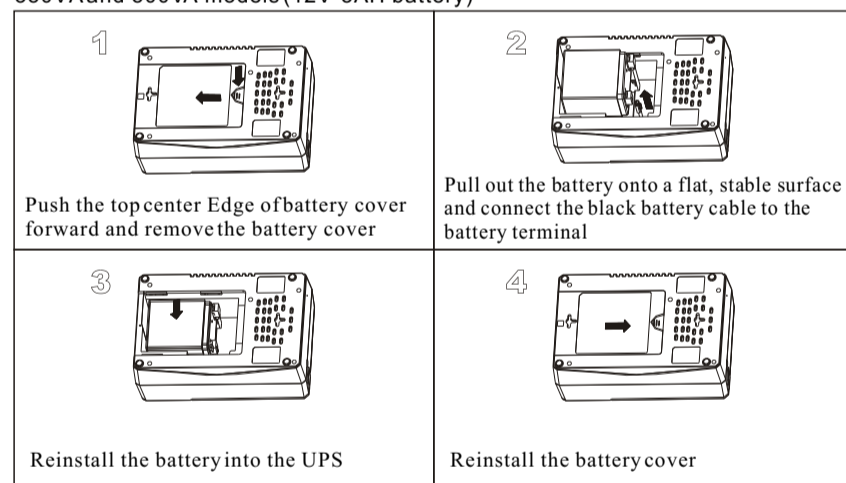
Once you have received the Powerware 3105 UPS product, you should remove and inspect the product for shipping damage. If any damage is found, please notify the carrier and your dealer. Please keep the shipping carton and the packing foam in the event the product must be returned to the factory for service.

**ATTENTION:** Maintenance must be performed by a qualified personnel. Failure to do so could result in an electric shock. Replace Battery with Powerware supplied Battery ONLY! Although the unit may be unplugged from utility power, hazardous voltage still may be present through the battery.

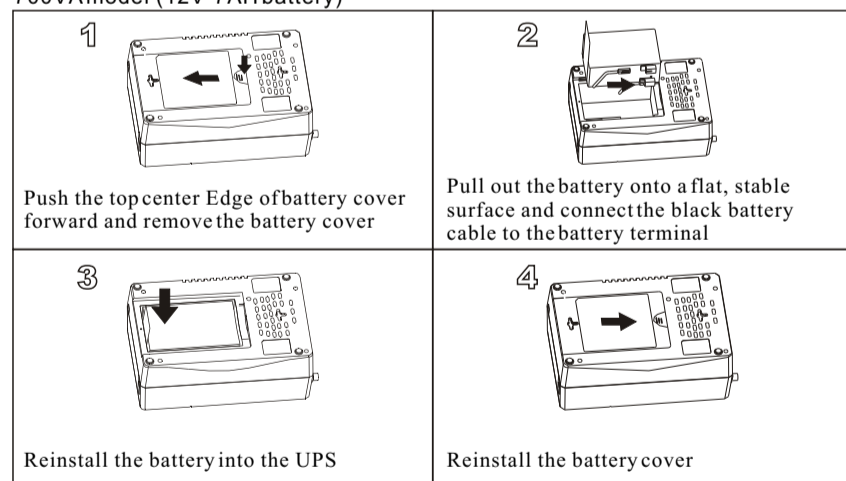
1. Place the Powerware 3105 UPS indoors in an area that has adequate airflow and is free of excessive dust. Do NOT allow the UPS to be exposed to moisture, rain, excessive heat, or direct sunlight.
2. Use of the Powerware 3105 UPS product in life support applications, where failure of this equipment can reasonably be expected to cause failure of life support equipment or to significantly affect its safety or effectiveness is **NOT** recommended.
3. Disconnect the input power cord from the wall outlet before replacing the battery.
4. When replacing the battery, use the same number and type of battery
5. Do **NOT** dispose of battery in a fire. The battery may explode.
6. Do **NOT** open or mutilate the battery. They contain an electrolyte that is toxic and harmful to the skin and eyes.
7. Proper disposal of the battery is required. Please refer to your local laws/regulations regarding battery disposal.
8. Use tools with insulated handles to replace the battery to avoid personal injury. Due to energy hazard, please remove wristwatches and jewelry such as rings when replacing battery.

## BATTERY CONNECTION REQUIRED BEFORE USE! Connecting the Battery:

350VA and 500VA models (12V-5AH battery)



700VA model (12V-7AH battery)



## INSTALLATION AND OPERATION:

Installation and Operation:

Following steps explain how to connect and operate the Powerware 3105 UPS.

1. Connect the UPS to a grounded power outlet.

**Note:** It is recommended that the battery should be charged for minimum 8 hours to ensure full charge before placing the UPS in service.

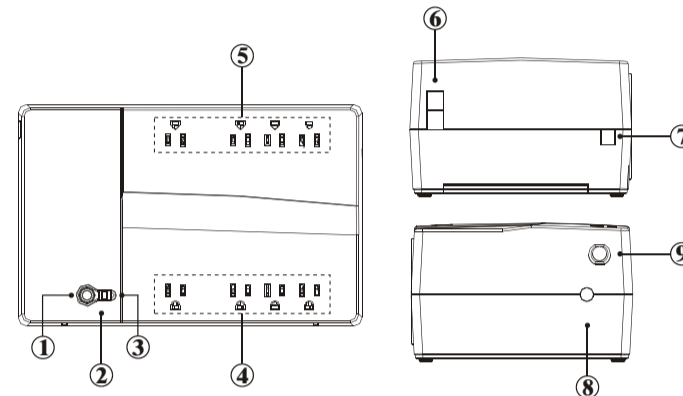
2. Plug your computer, monitor or load to be protected into the "Battery Backup & Surge Protection" outlets. (These outlets will provide emergency battery backup power during power outages as well as protection from surges and

spikes.)

**CAUTION:** Do NOT plug **LASER PRINTERS** into the "Battery Backup" outlets.  
**CAUTION:** Do NOT plug **ACCESSORY SURGE** strips into the "Battery Backup" outlets.

3. Plug your peripheral equipment or non-critical loads (printer, scanner, fax, speaker, etc.) into the "Surge Protection" outlets. (These outlets provide surge and spike protection only, they will NOT provide battery backup power during a utility power failure).
4. Connect your computer to the UPS using USB cable provided.
5. With your equipment turned off, switch on the UPS.
6. When the "On/Off" LED light is illuminated, turn on the connected equipment.
7. Install Power management software provided with the UPS

## INDICATORS



### 1. On/Off Push Button Switch

One switch controls the power to your equipment. Upon power turn on, unit performs a self-test.

**NOTE:** Turn on the UPS

Press the push button switch locked in to turn on the UPS.

**NOTE:** Turn off the UPS

Press the push button switch again to turn off the UPS.

**NOTE:** Self-Test

The UPS performs a self-test for about 3 seconds when the UPS is turned on.

### 2. On/Off Battery LED

Indicates the UPS is on and is powering your equipment.

A constantly illuminated LED indicates normal utility power operation.

A blinking LED indicates that the UPS is providing power from its battery.

### 3. Fault/Warning LED

Indicates a fault or warning condition is present.

A constantly illuminated LED indicates a fault or output SHORT condition.

A blinking LED indicates the UPS is overloaded or BAD battery condition.

### 4. Battery Backup & Surge Protection Outlets

Four 5-15R output receptacles that provide both battery backup and surge protection.

### 5. Surge Protection Outlets

Four 5-15R output receptacles that provide surge and spike protection.

### 6. Data/Phone/Fax Protection Connectors

RJ11/RJ45

### 7. USB Communication Port

The provided LanSafe monitoring and shutdown software can be automatically configured to save your files and shut down your computer in the event of a prolonged power outage. Your personal computer can receive the status of utility power line, utility power failure, on battery and low battery by contact closure signals that are sent through the USB port.

### 8. Circuit Breaker (resettable)

The button protrudes when an overload condition occurs. If the button protrudes, disconnect some non-essential equipment and reset the circuit breaker by pushing the button inward.

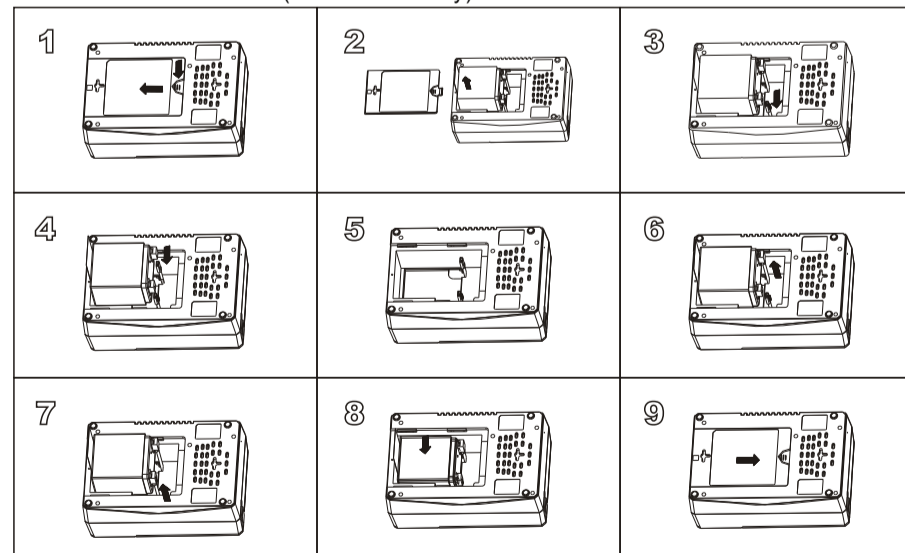
### 9. Power Cord

5-15P plug type attached - 6 foot line cord

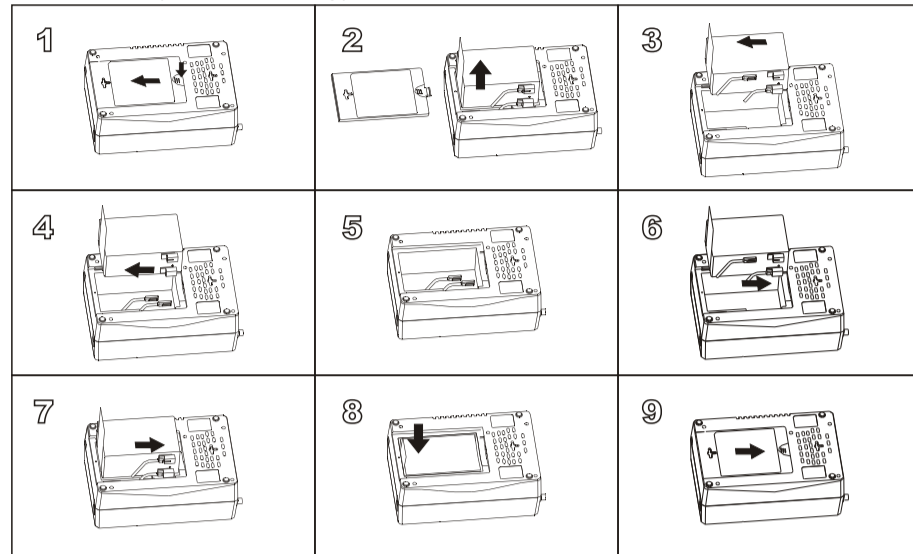
## BATTERY REPLACEMENT PROCEDURE:

1. Disconnect UPS system from power source.
2. Open battery door.
3. Disconnect used battery. Connect new battery. (It is important that connectors be firmly attached to new batteries.)
4. Close battery door
5. Properly recycle used battery.

350VA and 500VA models (12V-5AH battery)



700VA model (12V-7AH battery)



**STATUS INDICATORS:**

The UPS provides both visual and audible status indicators. Visual indicators consist of two LEDs to represent the following conditions:

- On utility power operation
- On battery power operation
- UPS fault/alarm

**LED & Alarm Status Table**

| UPS Status                   | Green LED               | Red LED | Buzzer  |
|------------------------------|-------------------------|---------|---------|
| Self-test                    | Blink 1 (by turns)      |         | B1      |
| AC (Utility) Mode            | Charging                | ON      | X       |
|                              | Charge Off              | ON      | X       |
|                              | Low Battery (Self-test) | ON      | Blink 2 |
|                              | Over Load               | ON      | Blink 2 |
| DC (Battery) Mode            | Normal                  | Blink 2 | X       |
|                              | Over Load               | Blink 2 | Blink 2 |
|                              | Low Battery             | Blink 2 | Blink 2 |
| Short / Fault                | X                       | ON      | ON      |
| Over-Battery / Battery Fault | X                       | Blink 2 | B5      |

Notes:

- Blink 1:** ON 0.5 seconds / OFF 0.5 seconds.
- Blink 2:** ON 0.25 seconds / OFF 0.25 seconds.
- B1:** 1 beep / 5 seconds, ON 0.25 seconds / OFF 4.75 seconds.
- B2:** 3 beeps / 30 seconds, ON 0.25 seconds / OFF 0.25 seconds 3 times, 28.5 seconds OFF.
- B3:** 2 beeps / 5 seconds, ON, 0.25 seconds / OFF 0.25 seconds 2 times, 4 seconds OFF.
- B4:** ON 0.5 seconds / OFF 0.5 seconds.
- B5:** 3 beeps / 5 seconds, ON 0.25 seconds / OFF 0.25 seconds 3 times, 3.5 seconds OFF.

**SPECIFICATIONS**

|  |  |
|--|--|
| Model Numbers                          | Capacity   |
| PW3105 350<br>PW3105 500<br>PW3105 700 | 350 VA / 210W<br>500 VA / 300W<br>700 VA / 420W                                    |
| Nominal Input Voltage                  | 120Vac   |
| Nominal Output Voltage                 | 120Vac   |
| Frequency                              | 50 / 60Hz auto sensing   |
| Total 8 Outlets                        | 4 Battery Backup & Surge Protection<br>4 Surge Protection only                     |
| Lighting / Surge Protection            | 320 Joules   |
| Transfer Time to Battery/AC            | 6ms Typical  |
| Battery Type                           | Maintenance free, Sealed and leak proof lead-acid battery                          |
| Battery Specification                  | 350 / 500 VA: 12V 5AH<br>750 VA: 12V 7AH   |
| Typical Backup Time                    | 3 minutes minimum at full rated load   |
| Internet / Phone / Fax Protection      | RJ11/RJ45  |
| Short Circuit Protection               | Circuit Breaker  |
| Communication Port                     | USB  |
| Operating Temperature                  | 0°C to 40°C  |
| Operating Relative Humidity            | 0 to 95% non-condensing  |
| Storage Temperature                    | -15°C to 50°C  |
| Net Weight                             | 350VA-9.5 pounds / 4.3kg<br>500VA-11.7 pounds / 5.3kg<br>700VA-14.3 pounds / 6.5kg |
| Dimensions (W x D x H)                 | 11 x 7 x 4.4 in.   |

\* Due to continuing product improvement programs, specifications subject to change without notice.

**TROUBLESHOOTING**

| Symptom   | Possible Cause  | Action to Take   |
|---|---|--|
| UPS will not turn on  | The battery is disconnected or utility power is not available at the wall outlet.<br>Input Circuit Breaker has tripped. | Connect the battery (see Connect Battery) and ensure power is available at the wall outlet.<br>Reduce the amount of equipment plugged into the outlets of the UPS. Next, reset the circuit breaker by pushing the plunger back in. |
| UPS is making a continuous sound and the "Overload" indicator is lighted. | The "Battery Backup & Surge Protection" outlets are overloaded.   | Turn off the UPS and reduce the amount of equipment connected to these outlets.  |

|   |   |   |
|---|---|---|
| UPS does not provide expected runtime.                    | The battery is not fully charged.                         | Removed all connected equipments from the UPS and charge the battery at least 8 hours. During this charging period, turn off the UPS to prevent unnecessary discharging.      |
|   | Battery is getting older.                                 | Call for service or you can replace the battery by ordering one from your dealer.   |
| When utility power fails, connected equipment loses power | The UPS is overloaded.                                    | Reduce the amount of equipment plugged into the outlets of the UPS. Try reducing the load by removing one piece of equipment at a time to determine if the problem continues. |
|   | The UPS has exhausted its available run time.             | The UPS will turn off when the battery has been depleted during an extended power outage. Allow the UPS to re-charge the battery, before continuing on battery operation.     |
|   | Equipment is connected to the "surge Protection" outlets. | Ensure the equipment that is to be protected from a power outage is plugged into the "Battery Backup & Surge Protection" outlets.   |
|   | The UPS may require service.                              | Contact Powerware Technical Support   |

**SERVICE AND SUPPORT**

For questions and/or problems, please call your local distributor or the help desk at one of the following telephone numbers and ask for a UPS technical representative.

|                                  |                   |
|----------------------------------|-------------------|
| United States:                   | 1.800.356.5737    |
| Europe, Middle East, and Africa: | +44.17.53.608.700 |
| Asia:                            | +852.2830.3030    |
| Australia:                       | +61.3.9706.5022   |

Please have the following information ready when you call the Help Desk:

- Model number and Serial number
  - Symptoms of failure or problem
  - Customer return address and contact information
- If repair is required, you will be given a Returned Material Authorization (RMA) Number. This number must appear on the outside of the package and on the Bill of Lading (if applicable). Use the original packaging or request packaging from the Help Desk or distributor. Units damaged in shipment as a result of improper packaging are not covered under warranty. A replacement unit will be shipped, freight prepaid for all units under warranty.

For additional information please visit us online: [www.powerware.com](http://www.powerware.com)

**EATON** | **Powerware**